





# Sandy

CE-standard  
CE EN 20347 certified.



## Coolmax®-lining

This technical material keeps your feet cool and draws perspiration away from the skin.



## Easy maintenance

The shoe can easily be cleaned with a damp cloth.



## Shock absorbing

The midsole in EVA guarantees shock absorption.



Elegant 1.58 inch/4 cm heel



Leather  
The outside of the shoe is leather.



## Ultra light

The midsole in EVA is very light, flexible and shock absorbing. The average shoe weight is 8.81 oz or 250 gram.



## Renewable insole

Renewable insole with Coolmax®. You can easily replace the insole regularly with our ultra comfortable insole OXYFOAM or use your own orthopedic insoles.



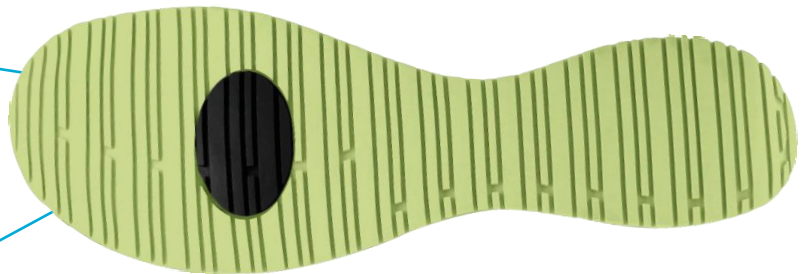
## Anti-static ESD

The shoe features a plug that improves the dissipation of static electricity and meets the ESD standard.



## Slip resistant SRC

The rubber outsole provides excellent grip, both on wet and dry floors and complies with the SRC standard.



## Usage

Suitable for those who walk and stand for a long time daily. So recommended for:

- Healthcare professionals
- Nurses and caregivers
- Wellness and beauty center professionals
- Homecare

Do not use to accompany patients in to the shower.

## Sizes

EU	36	37	38	39	40	41	42
UK	3.5	4	5	5.5	6.5	7	8
US	6	6.5	7.5	8	9	9.5	10.5

V+J OBUV, s. r. o.

Těbořská 235, 373 73 Písnovice, Česká republika / Czech republic  
I y: 251 72 221, DI y: CZ25172221 e-mail: l.jauker@vjobuv.cz, tel. +420 607 138 378 web: www.vjobuv.com