



Candy

CE-standard
CE EN 20347 certified.



Coolmax®-lining

Keeps your feet cool and draws perspiration away from the skin.



Easy maintenance

The none lycra part of the shoe can easily be cleaned with a damp cloth.



Shock absorbing

The midsole in EVA garantees shock absorption.



Lycra

The shoe exists mainly of very flexible lycra. This ultra soft material adjusts to any foot.



Ultra light

The midsole in EVA is very light, flexible and shock absorbing. The average shoe weight is 250 gram or 8.81 oz.



Renewable insole

Renewable insole with Coolmax®. You can easily replace the insole regularly with our ultra comfortable insole OXYFOAM of use your own orthopedic insoles.



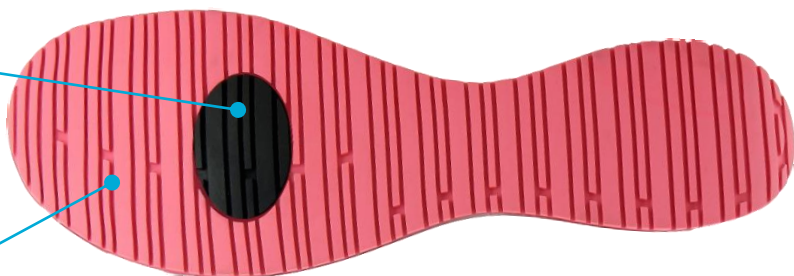
Anti-static ESD

The shoe features a plug that improves the dissipation of static electricity and meets the ESD standard.



Slip resistant SRC

The rubber outsole provides excellent grip, both on wet and dry floors and complies with the SRC standard.



Usage

Suitable for those who walk and stand for a long time daily. So recommended for:

- Healthcare professionals
- Nurses and caregivers
- Wellness and beauty center professionals
- Homecare

Do not use to accompany patients into the shower.

Sizes

EU	36	37	38	39	40	41	42
UK	3.5	4	5	5.5	6.5	7	8
US	6	6.5	7.5	8	9	9.5	10.5

V+J OBUV, s. r. o.

Těbo skř 235, 373 73 ě přnovice, ěeskř republika / Czech republic
I ě: 251 72 221, DI ě: CZ25172221 e-mail: l.jauker@vjobuv.cz, tel. +420 607 138 378 web: www.vjobuv.com